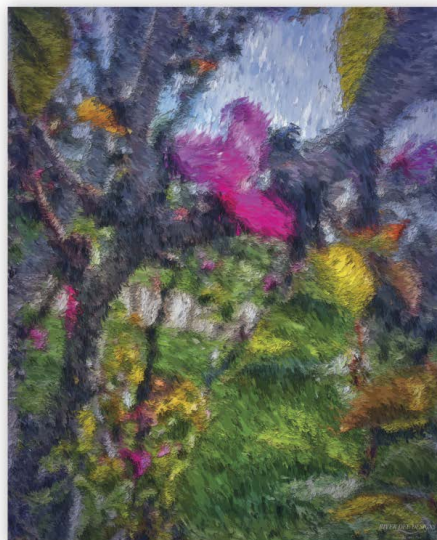


It's amazing what the simple click of a camera shutter can inspire. What's even more amazing is how a single photograph can transform into a breath-taking work of digital art.

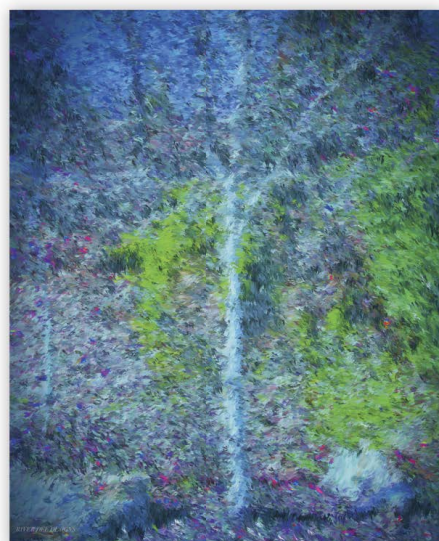
When Catharine Deever founded River Dee Designs in late 2018 after retiring from



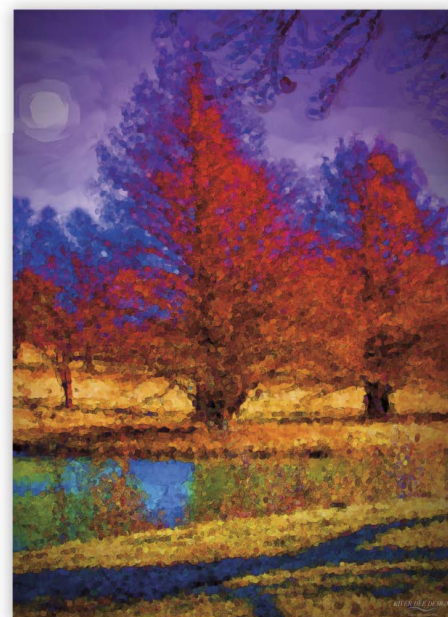
a career in education, the non-profit sector, government, and the business world, her creative instincts nudged her to try something new within her source of creative flow. The tools of her trade as a creative visionary are not the typical brushes, paints and palettes expected of an artist. Instead, Deever relies on pixels to create her stunning and breath-taking images.

"All of my images begin with a photograph, one I have taken personally or by a family member who collaborates with me," Deever explained. "Then, I transform the photographs into something new by blending software support from Adobe and Corel. The blending includes overlaying images onto one another, morphing colors, applying filters and painting effects."

Once a photo is selected from her archives, it is uploaded onto her computer, where she creates a myriad of versions, experimenting with them until they lead



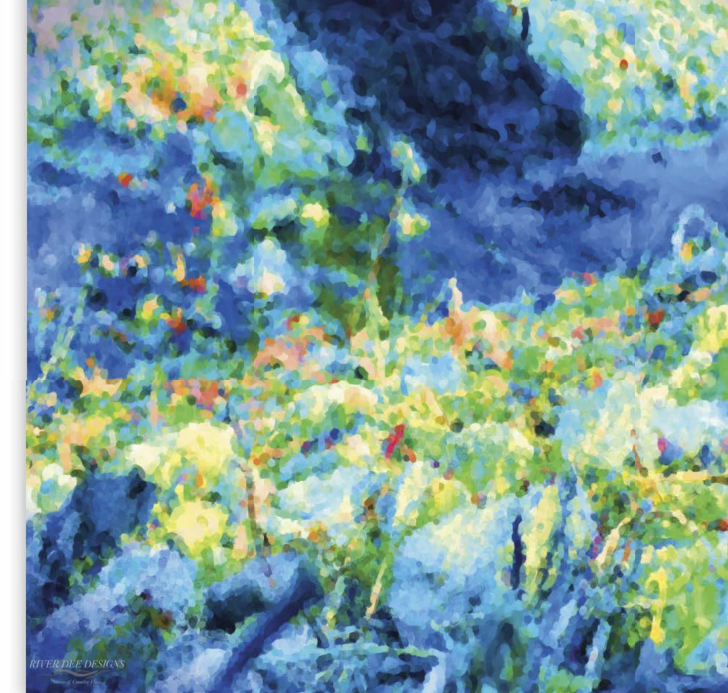
toward a certain style, color, and motif. "It is not uncommon for me to create 60 to 100 versions of an artwork prior to its completion," emphasized Deever.



After the general concept is determined, Deever begins to merge photo elements (if more than one photo is being used for the creations) and she begins to create scores of composite versions.

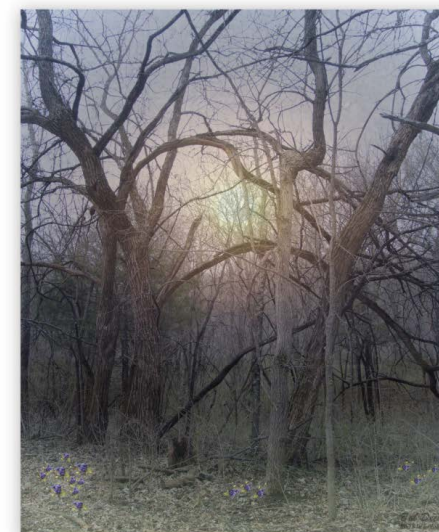
When blending is completed, Deever dives into the polishing and editing segments. From there, finishing touches are applied and the work undergoes final review if collaborators are involved, and then the work is signed.

"Contrary to how it sounds, I didn't learn the technical process to call attention to the electronic nature of our artworks – rather, to use the computer-assisted



process to achieve an emotional ambiance," reflected Deever, who sees photography as means by which to communicate caring and understanding for the subject, as opposed to merely documenting the facts within the image.

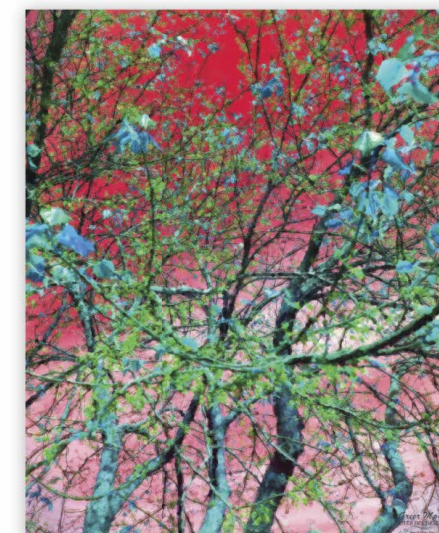
Deever's works are sold on a variety of websites including Saatchi Art. Her website [riverdeedesigns.com](http://riverdeedesigns.com) directs inquirers to the various sites where specific artworks



may be found. She also works on a commission basis under certain conditions. Recently, she began offering a new service to prospective clients, in which they can have one or more of their own photographs digitally transformed into an artwork,

[riverdeedesigns.com/client-personal-projects](http://riverdeedesigns.com/client-personal-projects).

While Deever possesses a keen artistic eye, she gratefully gives credit to others in



her family who have collaborated with her using their own individual photographic talents: her mother C.M. Deever; brother Bob Deever; sister Jeanette Deever Worthington; and brother-in-law Garry Worthington, all of whom have contributed photographs from which Catharine has created stunning works of art.

"I also want to extend special appreciation to Mike Dean, owner of the Leawood Fine Art Gallery who provides framing services for my clients," indicated Deever, who has

two award-winning images on display in the gallery, although most of her work is sold online.

"It's also important to recognize the importance of the quality printing services our artwork receives from Olathe's AC Printing. Translating pixels to the page is the step which defines success in producing the final image," Deever maintains.

Deever prices her works of art in a broad range to appeal to a wider audience. However, Deever's images have drawn considerable attention from home and office dwellers; interior designers and interior architects; and even a few art collectors who have an appreciation for the inspiration and motivation that are the hallmarks of her work.

"I create according to the priority interests of those who will see it - and I always want to see the environment in which my work will be incorporated - so that the artwork will be the fit desired," she emphasized. ■

**RIVER DEE DESIGNS**  
*Source of Creative Flow*

913.909.8555  
[riverdeedesigns.com](http://riverdeedesigns.com)  
[riverdeedesigns@riverdeedesigns.com](mailto:riverdeedesigns@riverdeedesigns.com)

