



Top Suburban Home Builder

GRAHAM HOMES

SPONSORED CONTENT

Graham Homes doesn't just build the Top Suburban Homes, he builds stylish dream homes for people that love the pace of city life yet find their bliss in peaceful wooded escapes. Known for his pleasant and easy-going attitude, owner Daniel "Danny" Graham specializes in transforming client wants and needs into handcrafted, ultra-functional homes that make every day feel like a vacation.

"Many of my clients are families in transition and want a home that offers both comfort and flexibility, such as Boomers and Empty-Nesters," Graham shared. "But young, growing families also appreciate the same flexibility."

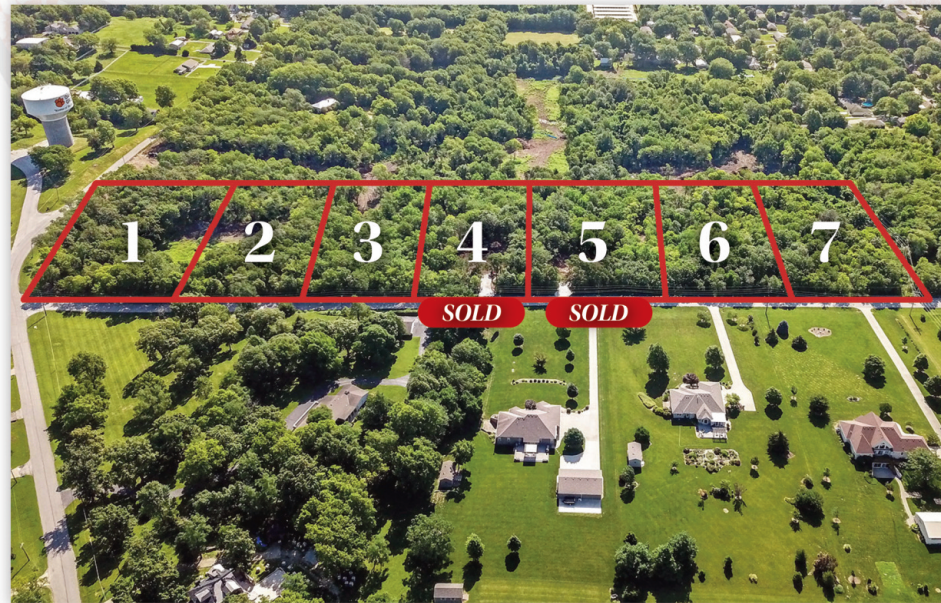
His single-story floorplans, designed with real life in mind, feature open floorplans, generous kitchens, and many bedrooms to accommodate large family gatherings as well as a single level for easy access.

Understanding the desire to have the advantages of city life but the undeniable attraction of living more of a suburban lifestyle, Graham is careful to choose homesites that can provide the best that both have to offer.

Currently, Graham Homes is constructing several new homes within three subdivisions: Cedar Ridge Heights 1 acre fully wooded lots in Oak Grove, Missouri, Crestview Drive of Sni-A-Bar Farms and Hoot Owl Estates in Grain Valley, Missouri, all of which meet his criteria and careful consideration.

Cedar Ridge Heights, offering 55 large 1 acre and ½ acre treed homesites, is one of his much sought after locations. Featuring lush, mature hardwood trees, homeowners have full access to big-city amenities while creating a retreat at a location that is the spiritual opposite of "suburbia".

"The location is truly ideal. There are great schools in the



area, every possible amenity is nearby and the homesites are spectacular," said Graham. "You absolutely forget you are so near the city."

Crestview Drive of Sni-A-Bar Farms offers estate treed walkout lots with private backyards. Clients can choose from any of the Graham Homes floor plans or Graham Homes can provide a



custom design. Crestview will offer walkout lots or low maintenance living lots with homes designed without steps.

The Hoot Owl Estates subdivision is located in the highly desirable community of Grain Valley, known as one of the fastest-growing cities in the Kansas City area. Grain Valley has also been recognized as the seventh safest city in Missouri and boasts a school district ranked among the top 10% in the state.

The Graham Homes portfolio consists of a variety of attractive floor plans from which to choose, with an average price point of \$230,000 through \$600,000.

"Most of our homes are ranch style open designs with roughly 1,600 to 2,000 square feet on the main floor," said Graham, a former cabinet maker who has more than 35 years in the home construction industry. Having parleyed that detailed work into every aspect of his craft, he has become widely recognized for his fine craftsmanship and unpretentious yet elevated designs. Honest, reliable, and hard-working, Graham focuses on delivering a quality product at affordable price points.

No matter the community or subdivision, Graham Homes understands how important a new home is and because of that priority, Graham and his team pay close attention to every single detail throughout the entire construction process, ensuring the new home building process is a truly satisfying experience.

"I enjoy offering this experience to my clients and look forward to being able to do something different every day," reflected Graham, who takes a strong personal interest in each home he builds, ensuring each client is a top priority. "Because I enjoy what I do so much it's easy to keep a high energy level and positive attitude towards every home. My job does not seem like work to me at all."

While Graham may refer to himself as a "modest-sized company"

among many regional building companies, his company is seeing exceptional growth. However, despite the growth, Graham will never lose sight of his first priority: his customers.

"We understand that we are not building houses, we're building homes. It is such a personal process. It is important to listen and fully understand the client's vision so you can translate that into a design that captures that vision and then highlight it with the unique beauty of the site. When you succeed, you build for the generations," he noted. ■



Graham
HOMES
"A comfortable place to be"

FOR MORE INFORMATION

816.716.9023

GrahamHomes.com

