

THE VILLAS AT METCALF VILLAGE MODEL



ARCHER'S LANDING AT SUNDANCE - THE EMRIK III MODEL



STONEBRIDGE COMMUNITIES - THE LANDON MODEL



## ROB WASHAM HOMES PRESENTS 3 UNIQUE MODELS

**BUILDER:** Rob Washam  
816.224.5583 • [RobWashamHomes.com](http://RobWashamHomes.com)

SPONSORED CONTENT

It's common knowledge the phrase "location, location, location" adds up to success in the real estate industry, and award-winning home builder Rob Washam of Rob Washam Homes embraces that philosophy with unwavering tenacity and enthusiasm. With 35+ years in the home building arena, it's safe to say Washam thoroughly knows homes inside and out. Over the course of his expansive and detailed career, Washam has had his hands in nearly every aspect of the home-building process, and that knowledge and expertise, coupled with the best in customer service, have made Rob Washam Homes one of the metro area's most coveted home builders.

Washam has left some pretty impressive footprints in the Johnson County market, and to that end is excited to announce some exciting upcoming home models in three newly-developed communities, all of which are certain to be the talk of the town.

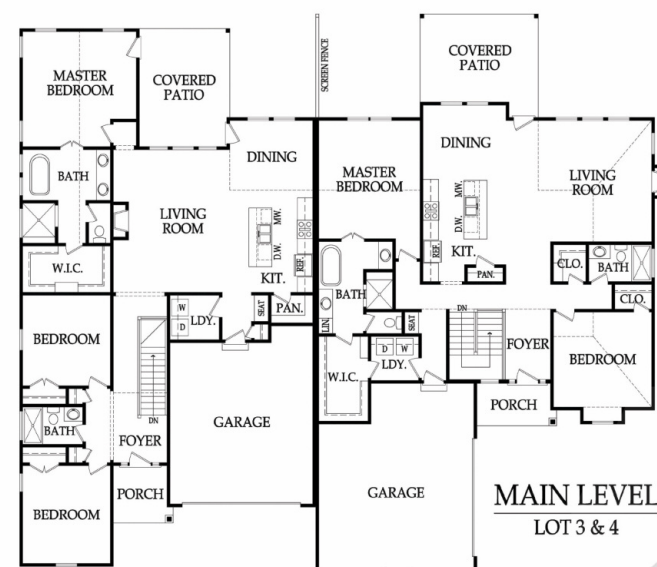
In the Villas at Metcalf Village, Washam has set himself apart as a top builder in maintenance-provided attached villas. Located in south Overland Park just off 159th Street and Metcalf, this is the perfect place to call home if you'd much rather focus on the fun and adventure in your life than worry about mowing the lawn, shoveling the snow or painting the exterior of your home.

"The Villas will have 38 units and we are in the process of completing our first models in anticipation of the Spring Parade of Homes," indicated Washam. With an average square footage of 1,800 square feet, each villa has a basement, a covered patio and deck, two-car garages and enjoy a \$395,000 - \$415,000 price point that just can't be beat for this thriving area.

In the heart of the Blue Valley School District, the Villas at Metcalf Village is within arm's reach of the prestigious and vibrant Bluhawk

development, one of Kansas City's largest mix-use projects with exceptional shopping, dining, and entertainment options.

"This particular area is on the brink of exploding, offering easy access to many retail stores, hotels, restaurants, highways, and more," noted Washam.



VILLAS AT METCALF VILLAGE FLOOR PLAN

Just a stone's throw away, Washam's homes will soon be available in the highly-anticipated community, Archer's Landing at Sundance. Situated on the Kansas side at 179th and State Line, an Archer's Landing address promises to be a notable one. Part of the Rodrock Development portfolio, Archer's Landing is a single family home

community, with home prices starting at \$400,000 and going on up through the \$1 million+ range. In the community's early stages, Washam will present his inspired Emrik III model, a brand new plan for his company and one that will surely captivate active families who desire a top-notch, one-of-a-kind quality home coupled with outstanding community benefits.

A 3,131 square foot, one-and-a-half story beauty, the Emrik III boasts five bedrooms, a loft and four bathrooms, along with some of the most exquisite interior design features. From its two-story great room with overlooking catwalk, luxurious master suite, expansive open layout on the main level, unique trim package and covered patio with easy access from the master bedroom, dining area and great room, this house is loaded with an extensive menu of extras.

"It is definitely worth the drive to see this," smiled Washam.

Exclusive amenities within the community include a pool complex with three pools; playground and picnic areas, paved trails, a community greenhouse, a campground for kids, and a 4,000 square foot, \$4 million ski-lodge-styled clubhouse with conference rooms, bar, fireplace, common area, indoor gymnasium, stage, workout facilities, indoor track, basketball court, climbing wall and spa. A concierge will also be available to help coordinate get-togethers, spa treatments and more.

Another not-to-miss area in which Washam will showcase his premier homes are within the Stonebridge communities in Olathe, also developed by Rodrock. These communities offer its residents a cornucopia of amenities, such as four swimming pools, changing cabanas, playgrounds, basketball and volleyball areas, pergola-covered grills, picnic areas, workout facilities and two clubhouses,

along with miles of paved trails linking all of the Stonebridge communities together.

"We try to pick the best places to build based on amenities and location," indicated Washam. "When you follow the 'location, location, location' rule, you will always do well, and it is true, as we are selling a lot of homes."

Washam is quick to credit his entire staff for the success of his company and undeniably appreciates that it takes a team to pave the road to success.

"We all make it work together, from our project managers, designers, accounting specialists, contracts and warranty specialists, and back office staff," he said. "We have an incredible team and none of what we have accomplished would be possible without them."

For Rob Washam Homes, however, this is just the tip of the iceberg. There is so much more to anticipate in the coming months, so stay tuned for further developments. Rob Washam Homes stands at the ready to show you the way home. This trusted, reliable, experienced and long-standing home building company is always opening doors to something new, wonderful and spectacular. Look for our finished model details in the upcoming May communities section.

ROB WASHAM HOMES



"Building Neighborhoods Since 1989"

Visit them online at [RobWashamHomes.com](http://RobWashamHomes.com)