



JAMES ENGLE CUSTOM HOMES PRESENTS THE CATALINA MODEL

BUILDER: James Engle Custom Homes
866.782.2220 • JamesEngle.com
SPONSORED CONTENT

When you enter The Catalina, the decidedly modern yet elegant appointments immediately give the feeling of a home that is meant to be the backdrop for generations of stories; a journal of life waiting for you to fill the pages. Kansas City's premier custom home builder, James Engle Custom Homes has served the metropolitan area since 2000 with an impeccable personal touch giving each one of their homes its own customized identity. The architecture is sleek, open and inviting; just what you would expect from a design that reflects all that made Modernism iconic. Yet, the 1.5 story home with additional basement, and starting at 3,370 square feet, is decidedly new and exciting, offering a style that is all its own.

"We try to be as thoughtful and thought provoking in our designs as possible," says Ben Tarwater, President of James Engle Custom Homes. "This design meets all the sensibilities of someone who loves traditional elements yet caters to those who crave the artistic elements of Modern design. We think it is the perfect blend of great design elements that will continue to speak to owners through the many stages of life, hopefully for generations to come."

Indeed, the design has much to say, and it is easy to love every word.

The two-story foyer is effortlessly elegant, welcoming you warmly with a sense of coming home and flowing seamlessly into the living space. The great room features a soaring ceiling and a stunning floor to ceiling stone facade fireplace, the centerpiece of the space. While spatially defined, this living area is open to the generously sized kitchen, pantry, and dining room.

Clean and simple yet visually stunning, the kitchen is every chef's dream. Your eye is drawn to the subway tiled wall with a mounted

contemporary styled hood vent accented with tempered glass. The island, designed for entertaining, seats four and provides additional workspace. Stainless steel appliances complement the hardware and fixtures, adding even more allure to its Modern design, which originally



had roots in the Industrial Revolution. The pantry provides plenty of shelf and floor space, and a desk to map out the next dinner party.

Windows surround the three walls in the dining room, bathing the space in beautifully gleaming light during the day and the ambiance of the stars in the evening.

Opposite the kitchen, the master bedroom, master bath, laundry room, and study flank the great room, creating a spacious and private area.

Natural elements continue to play an important role in the home's design with a covered patio accessible from both the master

bedroom and dining room, and visible from the great room through a wall of windows.

Upstairs is home to three generously sized bedrooms, each with walk in closets. One bedroom has its personal bathroom with shower, the other two bedrooms share a large bathroom with a tub.

At basement level, the clean, airy feel continues with warm wood floors, rock tile accents, a bar area with plentiful cabinet space, stainless steel counter tops and refrigerator. The space also includes an entertainment area, and allows for a playroom and gym.

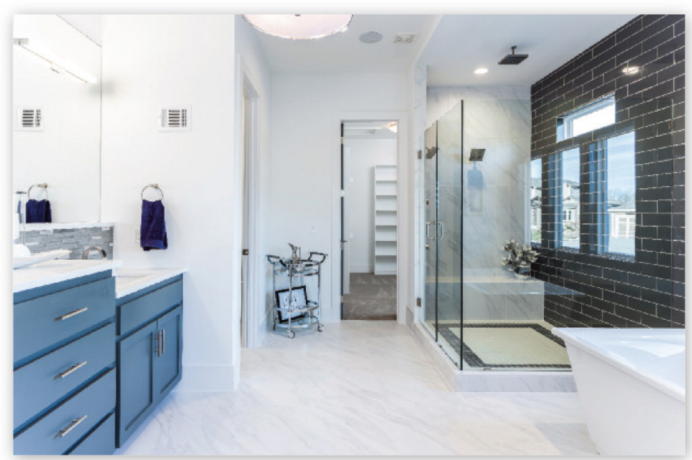
"The design is beautiful, but just as important, it is highly functional. We place a high importance on attention to details, even down to things such as amount of storage and placement, flow of traffic, and durability of materials," Kim Brune, Vice President of JECH explained.

Building a home that can withstand the test of time and be as functional and relevant 50 years from now as it is today takes the determination and dedication of every team member. This is what sets James Engle Custom Homes apart from other builders. Their homes continue to be among the top award winners in both spring and fall home parades, something they attribute to great teamwork as well as steadfastly finding ways to improve processes.

Most recently, the team incorporated a comprehensive construction management software into their process. The program provides a way to coordinate projects with precision. "The system allows the client to access their portal and make many of their design decisions right within the system. We share files and photos so they can stay up to date with the progress. It is also a great system of checks and balances for us as well. Our goal is not only to build a beautiful home,

it is to build a lasting relationship with our clients."

While the team at James Engle Custom Homes embodies the epitome of dedication, The Catalina is the embodiment of an ultimately sophisticated home with open design, generous spaces, contemporary



lines, and clerestory windows through which to view the world. It is design that takes you back but also leads you forward, and that is their highest hope.

James Engle
CUSTOM HOMES, LLC

For more information on James Engle Custom Homes, visit them online at JamesEngle.com

PHOTOS: TIMOTHY LAIR | DECOR: GALLERY DESIGN